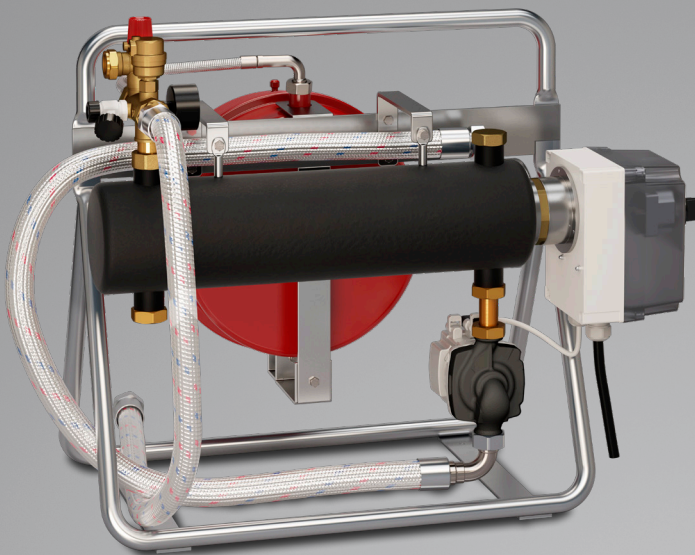


Portable Boiler

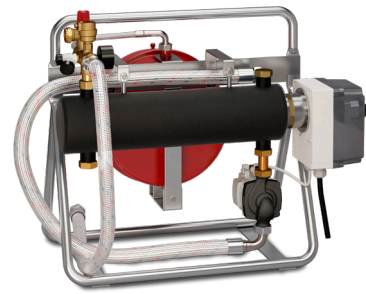
LK 440 EasyHeat, LK 450 EasyHeat P, LK 450 EasyHeat M



Portable Boiler

LK 440 EasyHeat

- Complete portable electrically heated boiler
- Available in 3 kW and 9 kW
- Easy installation



The LK 440 EasyHeat is a complete portable electrically heated boiler. It is primarily meant to be used as a temporary heater, e.g. for drying concrete slabs installed with under floor heating and for heating buildings under construction.

LK 440 EasyHeat is available in two versions, with 3-phase 400V or 1-phase 230V. The total output capacity on 3-phase 400V is 9 kW and works in two steps of 4.5 kW. The total output capacity on 1-phase 230V can be manually set between 2 or 3 kW.

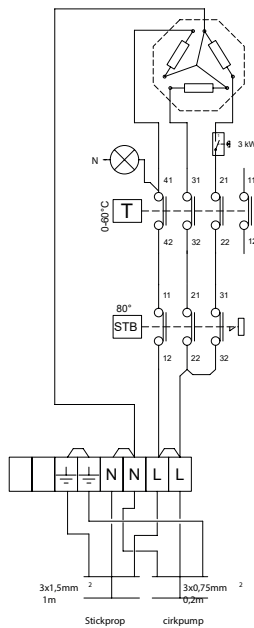
The boiler is supplied complete with a circulation pump, an expansion tank, and auxiliary devices including a safety valve and air vent valve. Connection to the under floor heating manifold or heating system is simple, using steel-reinforced flexible hoses. Temperature regulation is controlled by the boiler's operating thermostat.

TECHNICAL DATA

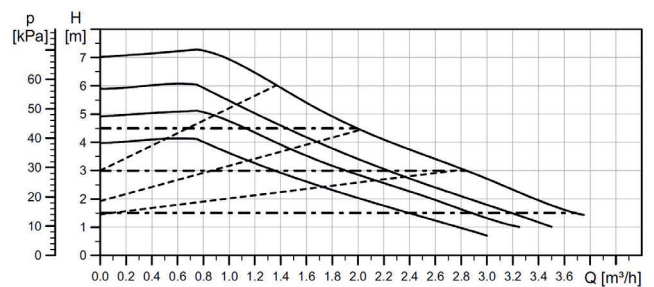
Protection class	IP 44
Circulating pump	Grundfos UPM3 AUTO
Operating thermostat	Max 60 °C
Safety thermostat	80 °C
Expansion tank	12 l
Safety valve	3 bar
Max. glycol solution	30%
Boiler volume	2.8 l



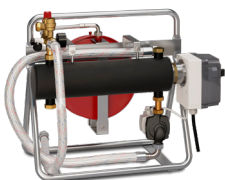
ELECTRIC CONNECTION DIAGRAM, MODEL 298 588



CAPACITY DIAGRAM



LK 440



Art.no.	Dim.	Connection	Voltage	B mm	H mm	L mm	Safety thermostat	Weight kg
298470	F 1"	3-phase 400 V Boiler must be protected using 3 x 16 A fuses (max. current 13.5 A)	9 kW in two stages at 4.5 kW	430	650	710	80 °C	30.0
298588	F 1"	1-phase 230V Boiler must be protected using 8,5 A 2 kW, 13 A 3 kW	2 alt. 3 kW	430	650	710	80 °C	30.0



LK 450 EasyHeat P - The next generation of our portable electric boiler

LK 450 EasyHeat P is a complete portable electrically heated boiler. It is primarily intended to be used as a temporary heater, for example to dry concrete slabs installed with underfloor heating, or to heat buildings during construction.

LK Armatur now has a total of five different models of electric boiler in its extensive range.



The transport trolley is available to purchase as an accessory.



Electric portable boiler

LK 450 EasyHeat P

- Portable
- Water level detection
- Lockable cabinet



TECHNICAL DATA

Voltage	400 V
Primary voltage, adapter	400 V
Max. boiler efficiency	9 kW (3 + 6 kW)
Sound level	<30 dB
Max. working pressure	3 bar
Working temperature	8-60 °C
Min. supply temperature	8 °C
Max. supply temperature	60 °C
Thread standard	G - female thread
Protection type	IP44
Media	Water - Glycol mixture max. 30%
Electrical connection	CEE-socket 400 V/16 A 5-pole
Circulating pump	Wilo Para 15/6 - Composite
Antifreeze function	Yes
Level guard	Yes
Expansion vessel	6 l
Overheating protection	80 °C
File import / export	Micro SD-card (not included)



The LK 450 EasyHeat P (programmable) 9 kW is a complete portable electrically heated boiler. It is primarily meant to be used as a temporary heater, e.g. for drying concrete slabs installed with under floor heating or for heating buildings under construction.

The temperature can be set between 8 and 60°C.

With the LK 450 EasyHeat P 9 kW, setting individual drying period programs is possible.

60 individual heating steps enable full control of the drying process and to receive a report on process afterwards if a micro SD-card is used.

When a program is finished, the boiler maintains a supply temperature of 8 °C to avoid risk of freezing.

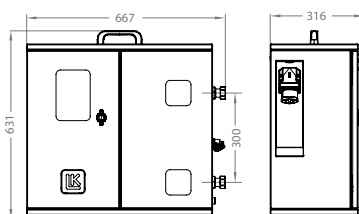
With its built-in water level detection, damage to the immersion heater is prevented if the water level in the system gets too low.

A constant temperature can be set when used as a temporary electric boiler.

EasyHeat comes in a blue aluminum cabinet with inspection window, so you can monitor the unit during operation. The cabinet can be locked to prevent accidental changes to the set temperature.






The LK 321 MultiFill® is available as an accessory, and makes it easy to fill the system. The LK 522 filter ball is used to protect EasyHeat from dirt and magnetite. Transport trolley to simplify moving unit. Connection pipes for easy connection between EasyHeat and the heating system. Refer to Accessories & Spare parts.

450 EasyHeat P - 9kW



Article no.	Dim.	Voltage	Weight kg
299529	F 1"	400 V	<25kg

SPARE PARTS AND ACCESSORIES

			Article no.	Article	Position
1.			187354	Wilco Para 15/6 - Composite	1
2.			187352	Transport trolley	2
3.			187353	2 pcs. flexible hoses 1" F x 1" M, 1,5 m	3
			092320	LK 321 MultiFill®	4
			182437	LK 522 FilterBall Magnet	5
4.					
5.					

Electric portable boiler

LK 450 EasyHeat M

- Portable
- Water level detection
- Lockable cabinet



TECHNICAL DATA

Voltage	3 kW: 230 V 9 kW: 400 V
Primary voltage, adapter	3 kW: 230 V 9 kW: 400 V
Max. boiler efficiency	3 kW (1,5 + 1,5 kW) 9 kW (3 + 6 kW)
Sound level	<30 dB
Max. working pressure	3 bar
Working temperature	8-60 °C
Min. supply temperature	8 °C
Max. supply temperature	60 °C
Thread standard	G - female thread
Protection type	IP44
Media	Water - Glycol mixture max. 30%
Electrical connection	3 kW: CEE 16 A/230 V/50 Hz/1-Phase 9 kW: CEE-socket 400 V/16 A 5-pole
Circulating pump	Wilo Para 15/6 - Composite
Antifreeze function	Yes
Level guard	Yes
Expansion vessel	6 l
Overheating protection	80 °C



The LK 450 EasyHeat M (manual) 3 kW or 9 kW is a complete portable electrically heated boiler. It is primarily meant to be used as a temporary heater, e.g. for drying concrete slabs installed with underfloor heating or for heating buildings under construction.

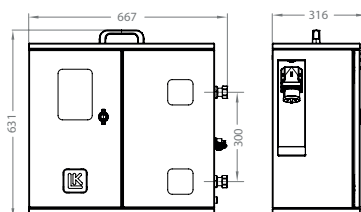
With the LK 450 EasyHeat M, setting the required constant temperature between 8 and 60°C is easy.

The LK 450 EasyHeat is available in two versions: single phase 230 V with 3 kW output or 3-phase 400 V with 9 kW output. With its built-in water level detection, damage to the immersion heater is prevented if the water level in the system gets too low.

EasyHeat comes in a blue aluminum cabinet with inspection window, so you can monitor the unit during operation. The cabinet can be locked to prevent accidental changes to the set temperature.

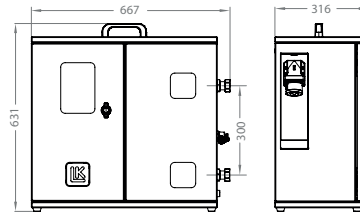
The LK 321 MultiFill® is available as an accessory, and makes it easy to fill the system. The LK 522 filter ball is used to protect EasyHeat from dirt and magnetite. Transport trolley to simplify moving unit. Connection pipes for easy connection between EasyHeat and the heating system. Refer to Accessories & Spare parts.

LK 450 EasyHeat M - 3kW








Article no.	Connection	Voltage	Weight kg
299742	1"	230 V	<25

LK 450 EasyHeat M - 9 kW



Article no.	Connection	Voltage	Weight kg
299748	1"	400 V	<25

SPARE PARTS AND ACCESSORIES

	Article no.	Article	Position
1. 	187354	Wilco Para 15/6 - Composite	1
2. 	187352	Transport trolley	2
3. 	187353	2 pcs. flexible hoses 1" F x 1" M, 1,5 m	3
4. 	092320	LK 321 MultiFill®	4
5. 	182437	LK 522 FilterBall Magnet	5

LK ARMATUR AB

Garnisonsgatan 49
SE-254 66 Helsingborg
Sweden

Phone: +46 (0)42-16 92 00
info@lkarmatur.se
order@lkarmatur.se

FOR THE SIMPLER, SMARTER EVERYDAY

Simpler. Smarter. More sustainable. At LK, we believe there's a better way to do everything. It's a belief all of us at LK apply to every product and solution we create – from water, heating and hydronic solutions to pipe extrusion.

Our **LK Armatur** business area is a leader in Europe, producing millions of valves per year for the global HVAC market. Beyond individual products, we understand how all parts interact in your complete application. From standard to sophisticated customizations of valves, controllers, components and prefabricated units, our full-spectrum expertise makes it easy to get the results you need today, while anticipating your needs tomorrow.

