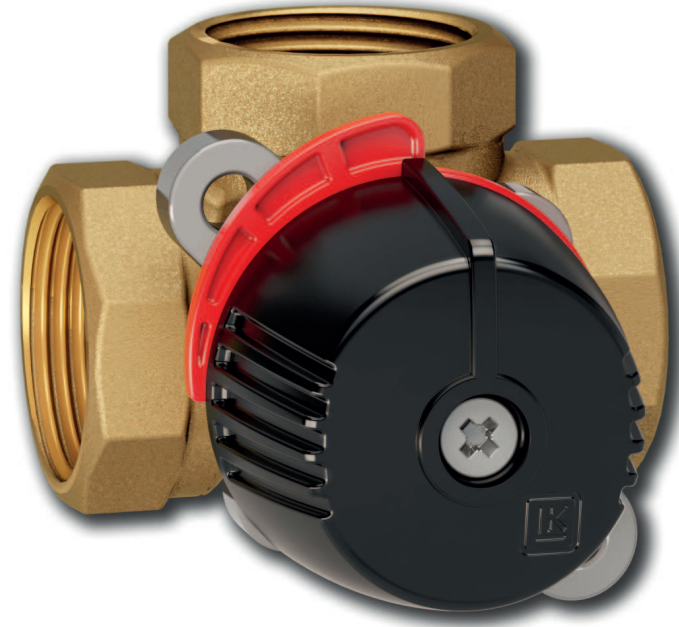
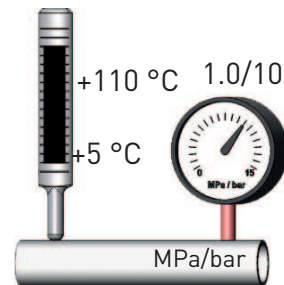
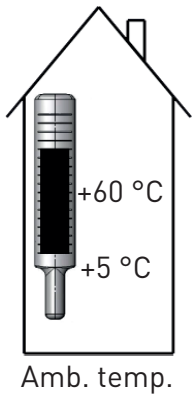
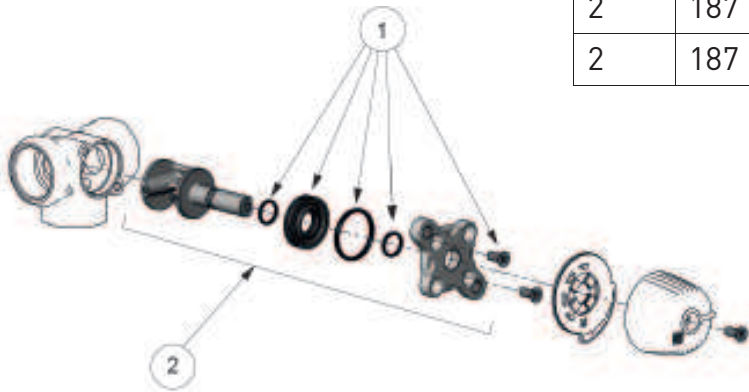


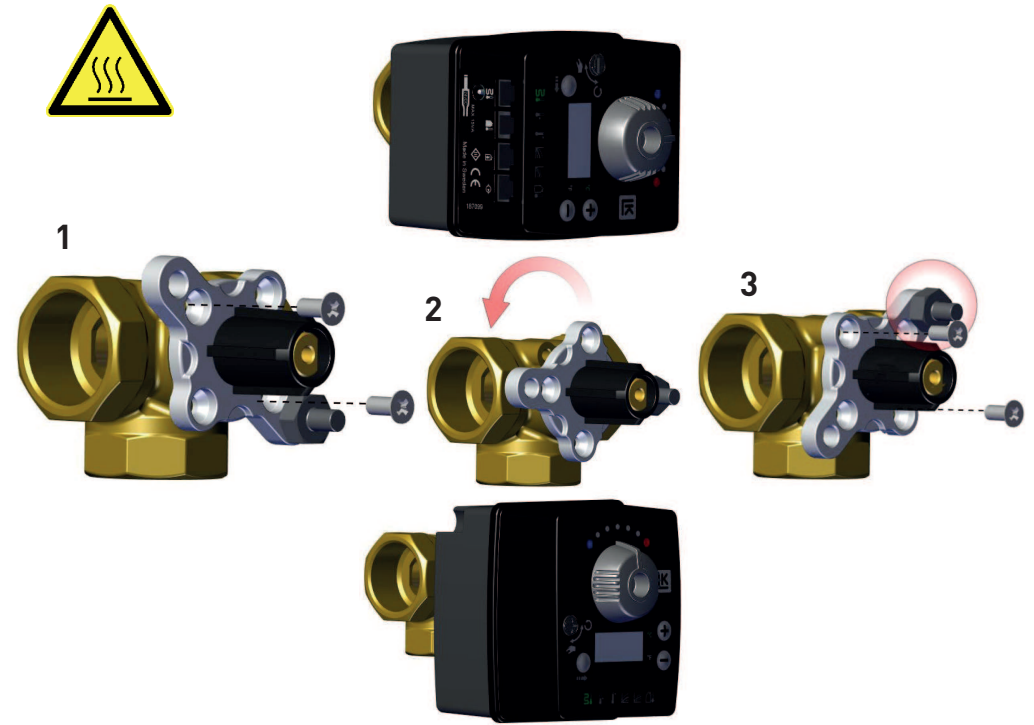
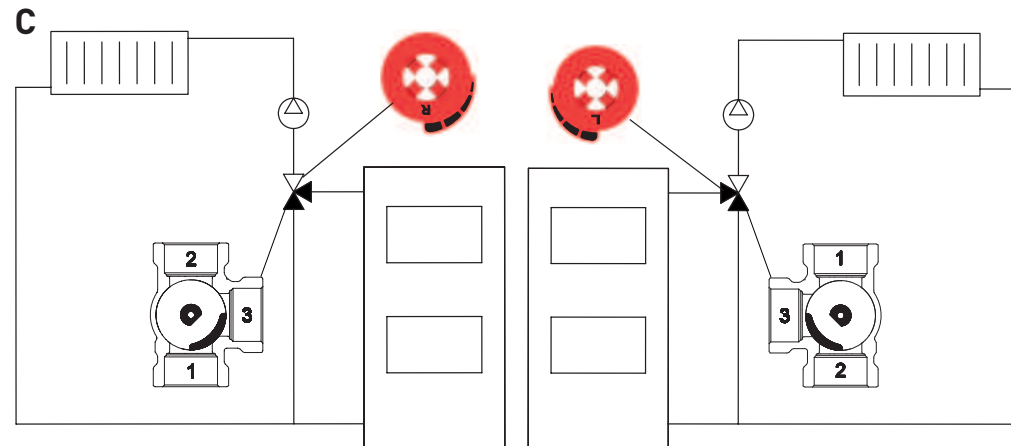
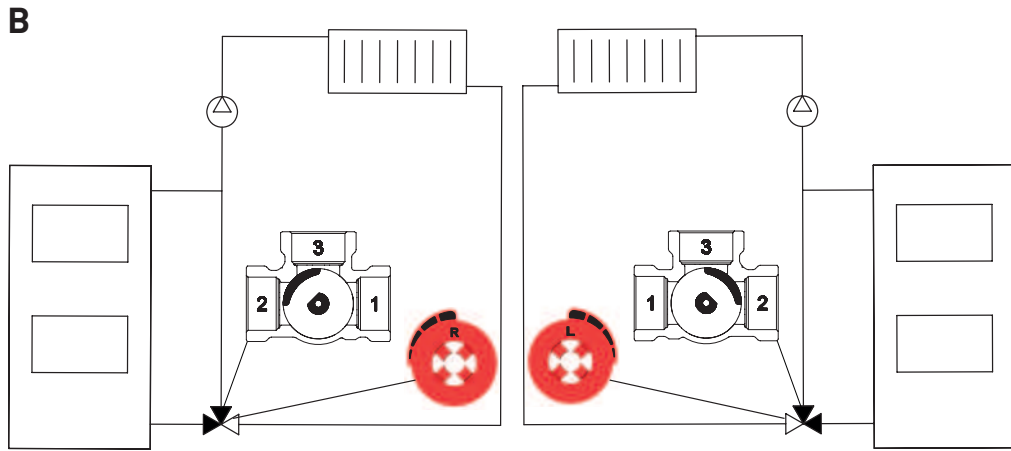
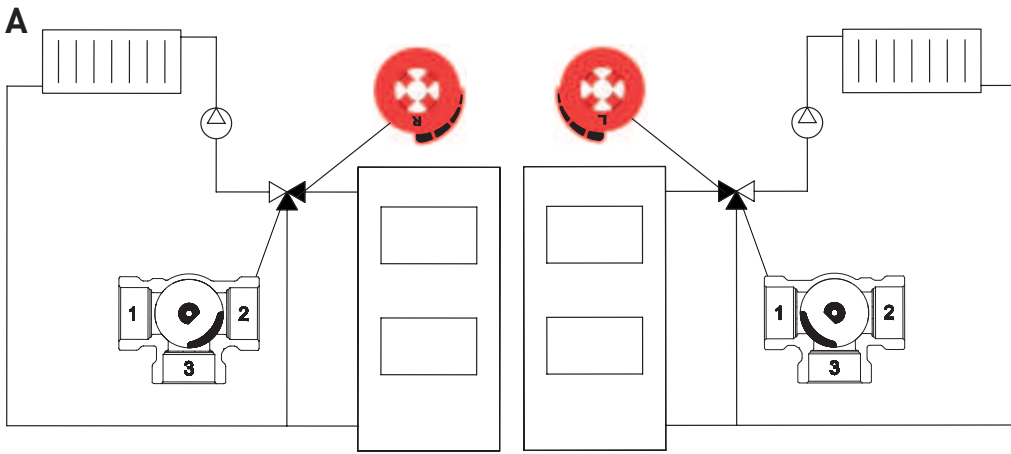
LK 840 2.0 ThermoMix®



Mixing Valve | Mischer | Vanne mélangeuse | Valvola
michelatrice meccanica | Sekoitusventtiili | Shuntventil

Pos.	Art.no.	DN
1	187 187	15-20
1	187 188	25
1	187 197	32
2	187 190	15-20
2	187 191	25
2	187 192	32





GB

The installation must be performed in accordance with applicable installation rules, laws and regulations. Never dismantle the valve under pressure.

DE

Die Installation muss in Übereinstimmung mit den geltenden Installationsregeln, Gesetzen und Vorschriften durchgeführt werden. Das Ventil darf niemals unter Druck demontiert werden.

FR

L'installation doit être effectuée conformément aux règles d'installation et selon les lois et réglementations en vigueur. La soupape ne doit jamais être démontée sous pression.

FI

Asennus tehdään voimassa olevien asennussäännösten, lakien ja määräysten mukaan. Venttiiliä ei saa purkaa paineenalaisena.

IT

L'installazione deve essere eseguita a regola d'arte in conformità alle norme vigenti. Non smontare la valvola quando è in pressione.

SE

Installationen ska utföras enligt gällande installationsregler, lagar och bestämmelser. Demontera aldrig ventilen under tryck.