

Zone valves

LK 525 MultiZone 2V, LK 525 MultiZone 3V, LK 525 MultiZone 3R



Zone Valves

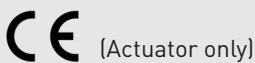
LK 525 MultiZone 2W

- Simple and flexible assembly with clip system
- Actuators are available as normally closed (NC) or normally open (NO). Direction is displayed on the actuator



TECHNICAL DATA

Working temperature	Min. 5 °C/Max. 80 °C (90 °C briefly)
Ambient temp.	Min. 1 °C/Max. 60 °C
Max. working pressure	1.0 MPa (10 bar)
Max. differential pressure	100 kPa (1 bar)
Leakage	< 0.1% of Kvs at 100 kPa
Angle of rotation	90°/360°
Media	Water - Glycol mixture max. 50% Ethanol mixture max. 30%
Thread standard	Rp - female thread G - male thread, ISO 228/1
Actuator	7 VA, 230 VAC, 50 Hz
Operation time	12 seconds (90°)
Electrical connection	Fixed wire
Signal connector	Single pole SPST
Protection class	IP 44
Material, valve body	Brass EN 12165 CW617N
Material, external cover	Brass EN 12164 CW614N
Material, slide/spindle	PPS Composite
Cable specification	Dimension 3 x 0,75 mm ²
Wire colours	Blue, brown, black
External insulation	PVC



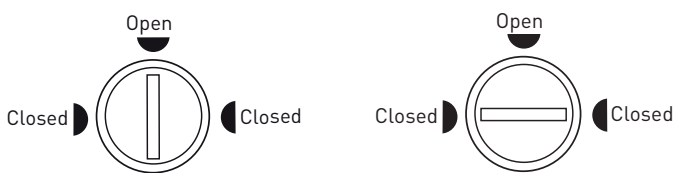
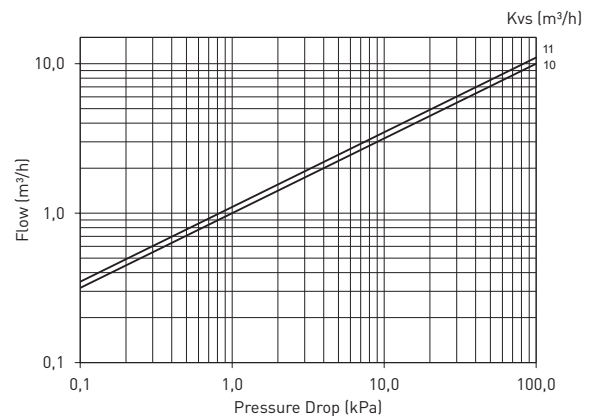
LK 525 MultiZone is a motorized 2-way zone valve for application in heating systems in which the flow through one or more zones is to be controlled. The zone valve has On/Off control and is designed with a turning slide which allows it to withstand a larger pressure difference and reduces the risk of it stalling after a long intermission. On the upper surface of the actuator is an indicator that shows which port is open or closed.

The zone valve must not be installed with the motor underneath the valve unit.

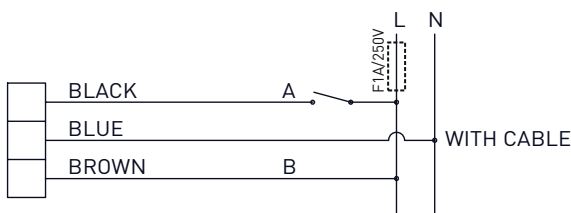
In case of a power failure, the valve cone stays in its current position. When the power is switched off, the valve can be manually set. Remove the motor and turn the spindle to your selected position. When the power is restored, turn the valve back to its original position and reinstall the motor.

Please note that the motor can be installed in only one position.

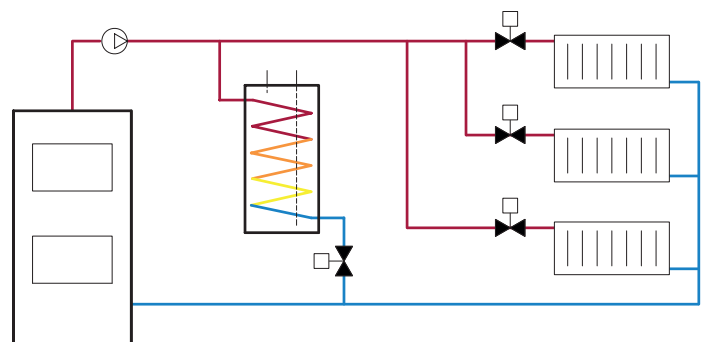
CAPACITY DIAGRAM



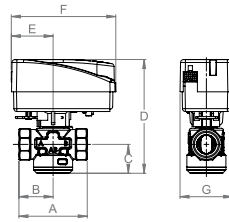
WIRING DIAGRAM



Valve and motor are available in closed or open position (NC; Normally Closed or NO; Normally Open)

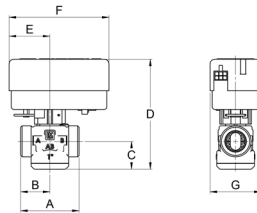


LK 525 2W -Female thread



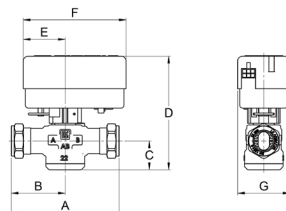
Article no.	Type	Dimension	Kvs m ³ /h	A mm	B mm	C mm	D mm	E mm	F mm	G mm	Weight kg
066246	NO	F 3/4"	10.0	70	35	30	118	43	107	54	0.2
066247	NO	F 1"	11.0	74	37	30	118	43	107	54	0.3
066248	NO	F 1 1/4"	11.0	84	42	30	118	43	107	54	0.6
066423	NC	F 3/4"	10.0	70	35	30	118	43	107	54	0.2
066424	NC	F 1"	11.0	74	37	30	118	43	107	54	0.3
066425	NC	F 1 1/4"	11.0	84	42	30	118	43	107	54	0.6

LK 525 2W - Male thread



Article no.	Type	Dimension	Kvs m ³ /h	A mm	B mm	C mm	D mm	E mm	F mm	G mm	Weight kg
066112	NC	M 3/4"	10.0	70	35	30	118	43	107	54	0.2
066102	NC	M 1"	11.0	62	31	30	118	43	107	54	0.3
066103	NC	M 1 1/4"	11.0	74	37	30	118	43	107	54	0.6
066115	NO	M 3/4"	10.0	70	35	30	118	43	107	54	0.2
066113	NO	M 1"	11.0	62	31	30	118	43	107	54	0.3

LK 525 2W - Compression fitting



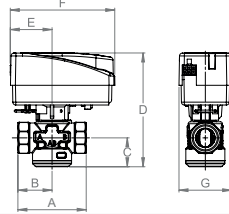
Article no.	Type	Dimension	Kvs m ³ /h	A mm	B mm	C mm	D mm	E mm	F mm	G mm	Weight kg
066105	NC	28 mm	11.0	110	55	30	118	43	107	54	0.6
066119	NO	28 mm	11.0	110	55	30	118	43	107	54	0.6

LK 525 2W - Actuator



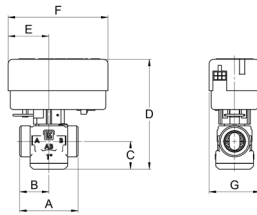
Article no.	Type	Connection	Weight kg
066111	NC	EMV 110-K SPST Actuator 230 VAC, Cable 1 m	0.3
066199	NO	EMV 110-K SPST Actuator 230 VAC, Cable 1 m	0.3

LK 525 2W SET – incl. Actuator 230VAC 1m Cable - Female thread



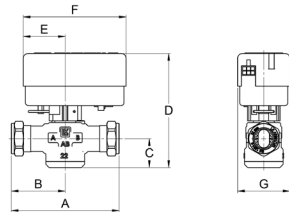
Article no.	Dimension	Kvs m ³ /h	A mm	B mm	C mm	D mm	E mm	F mm	G mm	Weight kg
066442	F ¾"	10.0	70	35	30	118	43	107	54	0.5
066443	F 1"	11.0	62	31	30	118	43	107	54	0.6
066444	F 1¼"	11.0	74	37	30	118	43	107	54	0.9

LK 525 2W SET – incl. Actuator 230VAC 1m Cable - Male thread



Article no.	Dimension	Kvs m ³ /h	A mm	B mm	C mm	D mm	E mm	F mm	G mm	Weight kg
066437	M ¾"	10.0	70	35	30	118	43	107	54	0.5
066438	M 1"	11.0	62	31	30	118	43	107	54	0.6
066439	M 1¼"	11.0	70	35	30	118	43	107	54	0.9

LK 525 2W SET – incl. Motor 230VAC 1m Cable - Compression fitting



Article no.	Dimension	Kvs m ³ /h	A mm	B mm	C mm	D mm	E mm	F mm	G mm	Weight kg
066440	22 mm	11.0	110	55	30	118	43	107	54	0.7
066441	28 mm	11.0	110	55	30	118	43	107	54	0.9

Zone Valves

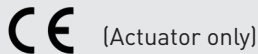
LK 525 MultiZone 3W

- Turning slide to reduce risk of stalling
- Minimal internal leakage
- Quick and easy assembly with clip system



TECHNICAL DATA

Working temperature	Min. 5 °C/Max. 80 °C (90 °C briefly)
Art.no. 066399, 066418:	Min. 5 °C/Max. 70 °C (80 °C briefly)
Cooling/Heating (inkl. adapter):	Min. -15 °C/Max. 120 °C (160 °C briefly)
Ambient temp.	Min. 1 °C/Max. 60 °C
Max. working pressure	1.0 MPa (10 bar)
Max. differential pressure	100 kPa (1 bar)
Leakage	< 0.1% of Kvs at 100 kPa Solar: < 0.5% of Kvs at 100 kPa
Angle of rotation	60°/360°
Media	Water - Glycol mixture max. 50% Ethanol mixture max. 30%
Thread standard	Rp - female thread, G - male thread, ISO 228/1
Actuator	7 VA, 230 VAC, 50 Hz 7 VA, 24 VAC, 50 Hz
Operation time	8 seconds (60°)
Electrical connection	Fixed wire alternatively Molex®-compatible connector
Signal connector	Single pole SPST
Protection class	IP 40 (Molex®) / IP 44 (Cable)
Material, valve body	Brass EN 12165 CW617N
Material, external cover	Brass EN 12164 CW614N
Material, slide/spindle	PPS Composite
Cable specification	Dimension 3 x 0.75 mm ²
Wire colours	Blue, brown, black
External insulation	PVC
Connection	Molex® or Molex®-compatible connector, 6-circuit



LK 525 MultiZone 3W is a motorized 3-way zone valve for On/Off control. The zone valve is designed with a turning slide which allows it to withstand a larger pressure difference and reduces the risk of it stalling after a long intermission. This makes it especially suited for heat pump applications where there can be long intermissions between the changes to the direction of the flow during the warm season. On the upper surface of the actuator is an indicator that shows which port is open.

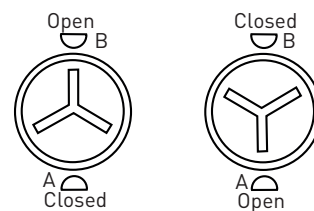
Installing the 016177 plastic adapter between the valve unit and the motor protects the motor against condensation, icing and high temperatures.

The zone valve must not be installed with the motor underneath the valve unit.

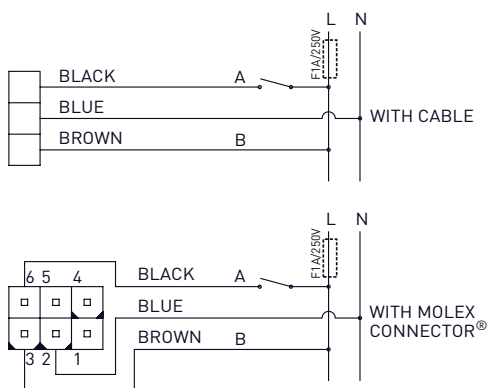
In case of a power failure, the valve cone stays in its current position.

When the power is switched off, the valve can be manually set to the centre position, which distributes the flow between the heating and tap water circuits. Remove the motor and turn the spindle about 30° or turn until hot water flows through both valve ports. When the power is restored, turn the valve back to its original position and reinstall the motor.

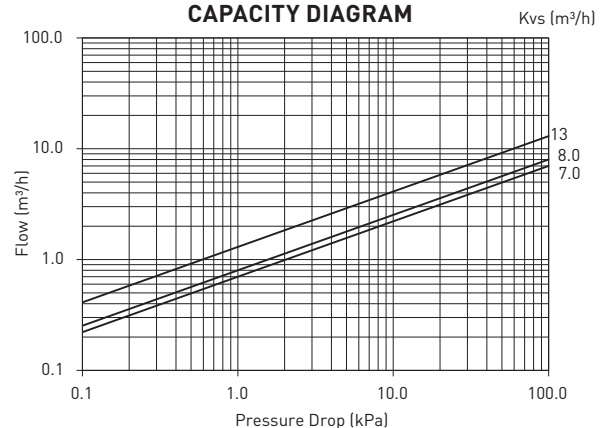
Please note that the motor can be installed in only one position.

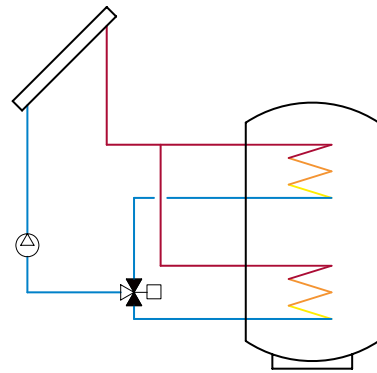
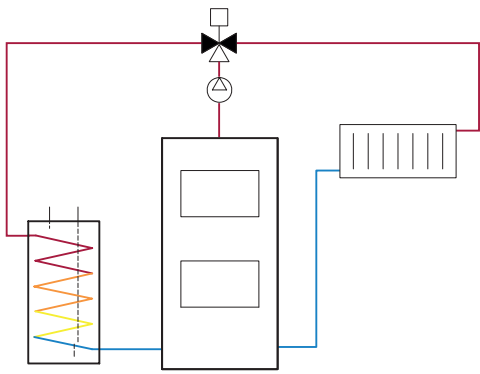


WIRING DIAGRAM

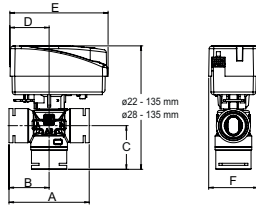


CAPACITY DIAGRAM



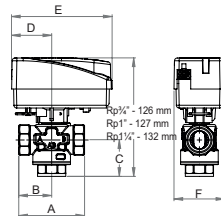


LK 525 - Quick Connection



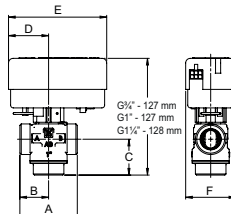
Article no.	Dimension	Kvs m ³ /h	A mm	B mm	C mm	D mm	E mm	F mm	Weight kg
182306	Ø 22	8.0	84	42	46	43	107	54	0.3
182307	Ø 28	8.0	88	44	48	43	107	54	0.5

LK 525 3W - Female thread



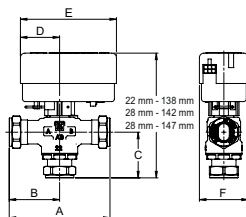
Article no.	Dimension	Kvs m ³ /h	A mm	B mm	C mm	D mm	E mm	F mm	Weight kg
066420	F 3/4"	7.0	70	35	39	43	107	54	0.3
066421	F 1"	8.0	74	37	40	43	107	54	0.3
066422	F 1 1/4"	8.0	84	42	45	43	107	54	0.6

LK 525 3W - Male thread



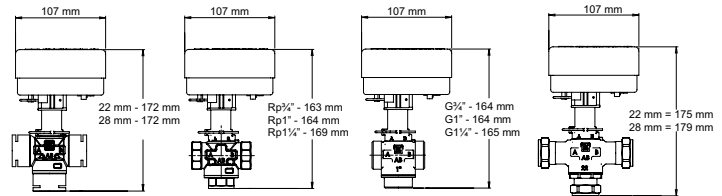
Article no.	Dimension	Kvs m ³ /h	A mm	B mm	C mm	D mm	E mm	F mm	Weight kg
066000	F 3/4"	7.0	70	35	39	43	107	54	0.3
066106	F 1"	8.0	62	31	39	43	107	54	0.3
066107	F 1 1/4"	8.0	74	37	40	43	107	54	0.6
066418	F 1 1/4"	13.0	88	44	48	43	107	54	0.8

LK 525 3W - Compression fitting



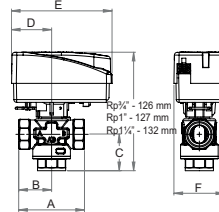
Article no.	Dimension	Kvs m ³ /h	A mm	B mm	C mm	D mm	E mm	F mm	Weight kg
066108	22 mm	8.0	110	55	50	43	107	54	0.4
066109	28 mm	8.0	110	55	54	43	107	54	0.6
066399	28 mm	13.0	114	57	59	43	107	54	0.8

LK 525 3W - Actuator and Adaptor



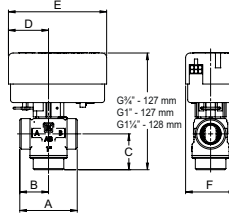
Article no.	Article	Weight kg
066177	Adapter Polar / Solar	0.03
066060	EMV 110-M SPST Actuator 230 VAC with Molex®	0.3
066061	EMV 110-K SPST Actuator 230 VAC with cable 1 m	0.3
066062	EMV 110-K SPST Actuator 230 VAC with cable 3 m	0.4
066063	EMV 110-M SPST Actuator 24 VAC with Molex®	0.3
066083	Cable-M 3x0.75 L=1 m with Molex®	0.1

LK 525 3W SET - incl. Motor 230VAC 1m Cable - Internal thread



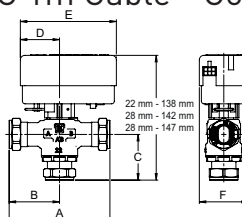
Article no.	Dimension	Kvs m ³ /h	A mm	B mm	C mm	D mm	E mm	F mm	G mm	Weight kg
066433	F 3/4"	7.0	70	35	39	126	43	107	54	0.6
066434	F 1"	8.0	74	37	40	127	43	107	54	0.6
066435	F 1 1/4"	8.0	84	42	45	132	43	107	54	0.9

LK 525 3W SET - incl. Motor 230VAC 1m Cable - Male thread



Article no.	Dimension	Kvs m ³ /h	A mm	B mm	C mm	D mm	E mm	F mm	Weight kg
066426	F 3/4"	7.0	70	35	39	43	107	54	0.6
066427	F 1"	8.0	62	31	39	43	107	54	0.6
066428	F 1 1/4"	8.0	74	37	40	43	107	54	0.9
066429	F 1 1/4"	13.0	88	44	48	43	107	54	0.11

LK 525 3W SET - incl. Motor 230VAC 1m Cable - Compression fitting



Article no.	Dimension	Kvs m ³ /h	A mm	B mm	C mm	D mm	E mm	F mm	Weight kg
066430	22 mm	8.0	110	55	50	43	107	54	0.7
066431	28 mm	8.0	110	55	54	43	107	54	0.9
066432	28 mm	13.0	114	57	59	43	107	54	0.11

SPARE PARTS AND ACCESSORIES



Article no.	Article	Position
187202	Insulation	1

Zone Valves

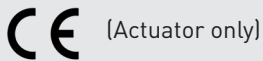
LK 525 MultiZone 3R

- Minimal internal leakage
- The slide is designed to provide accurate regulation at low flows.



TECHNICAL DATA

Voltage	230 VAC, 50 Hz
Power consumption	5 VA
Working temperature	Min. 5 °C/Max. 80 °C (90 °C briefly)
Ambient temp.	Min. 5 °C/Max. 55 °C
Max. working pressure	1.0 MPa (10 bar)
Max. differential pressure	100 kPa (1 bar)
Leakage	< 0.1% of Kvs at 100 kPa
Angle of rotation	90°
Torque	5 Nm
Media	Water - Glycol mixture max. 50% Ethanol mixture max. 30%
Thread standard	G - male thread, ISO 228/1
Operation time	110 s
Manual override	Yes
Electrical connection	Fixed wire
Signal connector	3 point SPDT
Protection type	IP 44
Protection class	II
Material, valve body	Brass EN 12165 CW617N
Material, external cover	Brass EN 12164 CW614N
Material, slide/spindle	PPS Composite
Cable specification	3 x 0.75 mm ²
Wire colours	Blue, brown, black
External insulation	PVC



LK 525 MultiZone 3R is a 3-way valve that can be used as a mixing valve or as a diverting valve in heating systems.

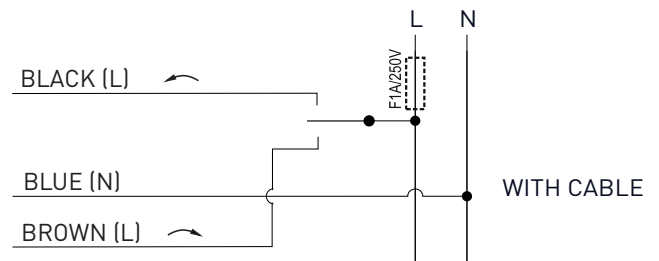
The valve is constructed so that the leakage is less than 0.1% of Kvs at 100 kPa. It also has a split linear characteristic which means that the regulation is good even at low flows and capacities.

The valve must not be installed with the motor underneath the valve unit.

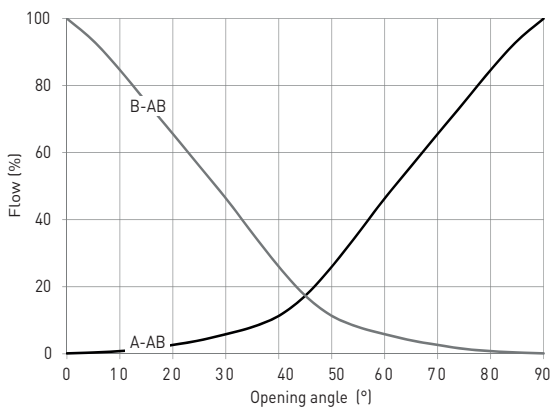
Please note that the motor can be installed in only one position.

The motor operates anti clockwise when the black conductor is powered and clockwise when the brown conductor is powered.

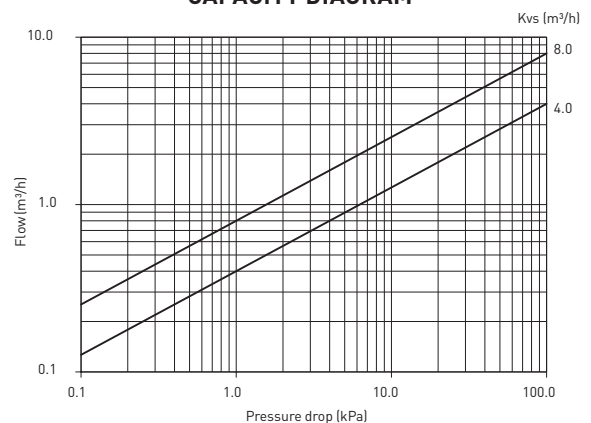
WIRING DIAGRAM

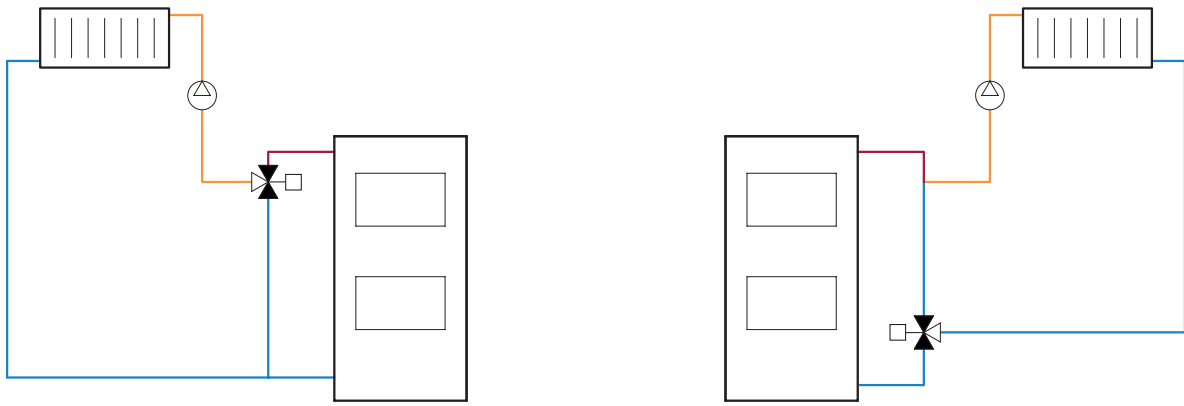


VALVE CHARACTERISTICS

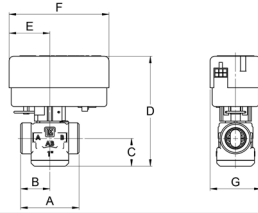


CAPACITY DIAGRAM





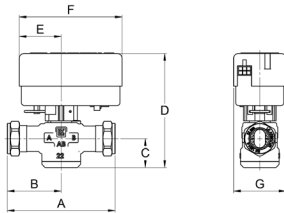
LK 525 3R - Male thread



Article no.	Dimension	Kvs m ³ /h	A mm	B mm	C mm	D mm	E mm	F mm	G mm	Weight kg
066077	M 1"	8.0	62	31	39	132	46	109	58	0.3

Other dimensions on request. See pages 86 - 87.

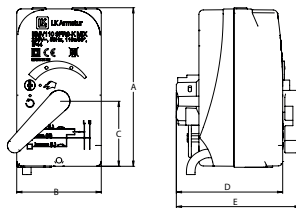
LK 525 3R - Compression fitting



Article no.	Dimension	Kvs m ³ /h	A mm	B mm	C mm	D mm	E mm	F mm	G mm	Weight kg
066079	22 mm	8.0	110	55	50	143	46	109	58	0.4
066080	28 mm	8.0	110	55	54	147	46	109	58	0.6

Other dimensions on request. See pages 86 - 87.

LK 940 C



Article no.	Connection	Voltage	Torque	Operation time	A mm	B mm	C mm	D mm	E mm	Weight kg
066127	1 m cable	230 V	5 Nm	110 s*	109	58	45	73	85	0.4
066128	1 m cable 0-10 VDC	24 VAC	5 Nm	110 s*	109	58	45	73	85	0.4

*Other operation times on request.

SPARE PARTS AND ACCESSORIES



Article no.	Article	Position
187202	Insulation	1

Design your own zone valve

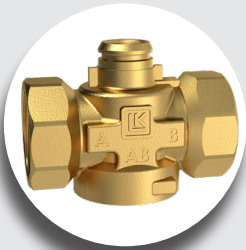


Cable

Molex®

24 VAC

230 VAC



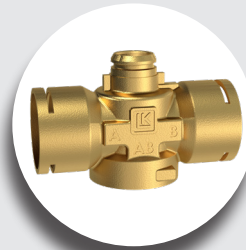
Female thread

- 3/4"
- 1"
- 1 1/4"



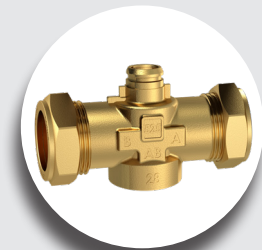
Male thread

- 3/4"
- 1"
- 1 1/4"



Quick Connection

- Ø22
- Ø28



Compression fitting

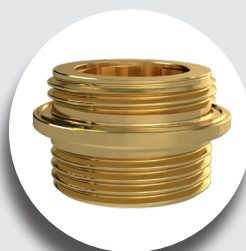
- Ø22
- Ø28



3-Way



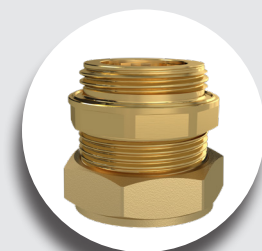
Female thread



Male thread



Quick Connection



Compression fitting

For more information please contact our Sales Department.

Design your own valve



Actuator 90°

Cable

24 VAC

230 VAC



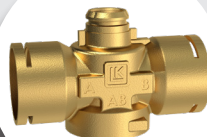
Female thread

- 3/4"
- 1"
- 1 1/4"



Male thread

- 3/4"
- 1"
- 1 1/4"



Quick Connection

- Ø22
- Ø28



Compression fitting

- Ø22
- Ø28



2-Way



3-Way regulating

- Kvs 4



3-Way regulating

- Kvs 8



2-Way



Female thread



Male thread



Quick Connection



Compression fitting

LK ARMATUR AB

Garnisonsgatan 49
SE-254 66 Helsingborg
Sweden

Phone: +46 (0)42-16 92 00

Fax: +46 (0)42-16 92 20

info@lkarmatur.se

order@lkarmatur.se

FOR THE SIMPLER, SMARTER EVERYDAY

Simpler. Smarter. More sustainable. At LK, we believe there's a better way to do everything. It's a belief all of us at LK apply to every product and solution we create – from water, heating and hydronic solutions to pipe extrusion.

Our **LK Armatur** business area is a leader in Europe, producing millions of valves per year for the global HVAC market. Beyond individual products, we understand how all parts interact in your complete application. From standard to sophisticated customizations of valves, controllers, components and prefabricated units, our full-spectrum expertise makes it easy to get the results you need today, while anticipating your needs tomorrow.

