



# LK 162 SmartStove®

LK Armatur



# LK 162 SmartStove®

“With the alarm function in case of over temperature, you can enjoy the warmth without worrying”



LK 162 SmartStove® is a biomass controller for multi-fuel water-containing stoves with buffer tanks. The controller has a number of preset hydraulic systems for different installations.

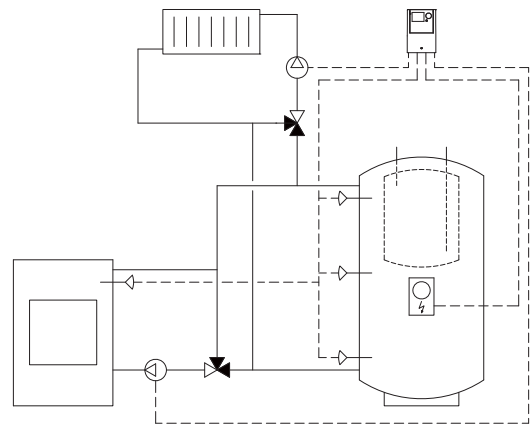
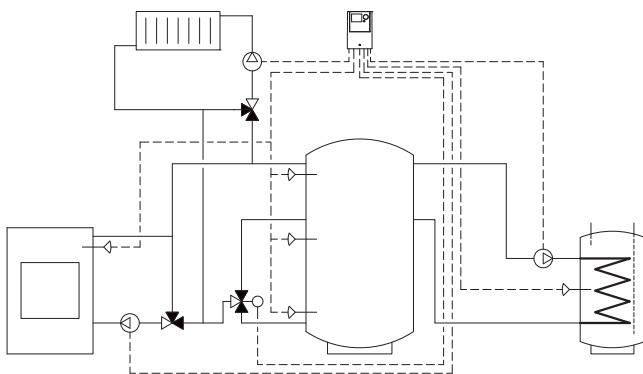
For indication of the active hydraulic system and the current temperatures in stove and buffer tank the controller is equipped with a coloured full graphics display which is permanently backlit.

LK 162 SmartStove® can control the charge pump of a loading unit, the circulator in a heating loop, high-efficiency pumps and an additional heat source.

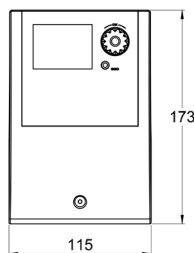
## TECHNICAL DATA

Voltage	230 VAC ± 10%, 50 Hz
Power consumption	3,5 VA
Relay output	Max. 240 VAC, 4 A
Triac outputs	230 VAC ± 10%, 1 A, 200 VA
High-efficiency pump	Analog output 0 -10 V, max. 10 mA PWM output 100 Hz - 2 kHz
Sensors	PT 1000
Display	TFT backlit colour display 47 x 35 mm
Protection type	IP 20
Protection class	II

## EXAMPLE OF TWO DIFFERENT HYDRAULIC SYSTEMS



## LK 162 SMARTSTOVE®



### Article no.

181708

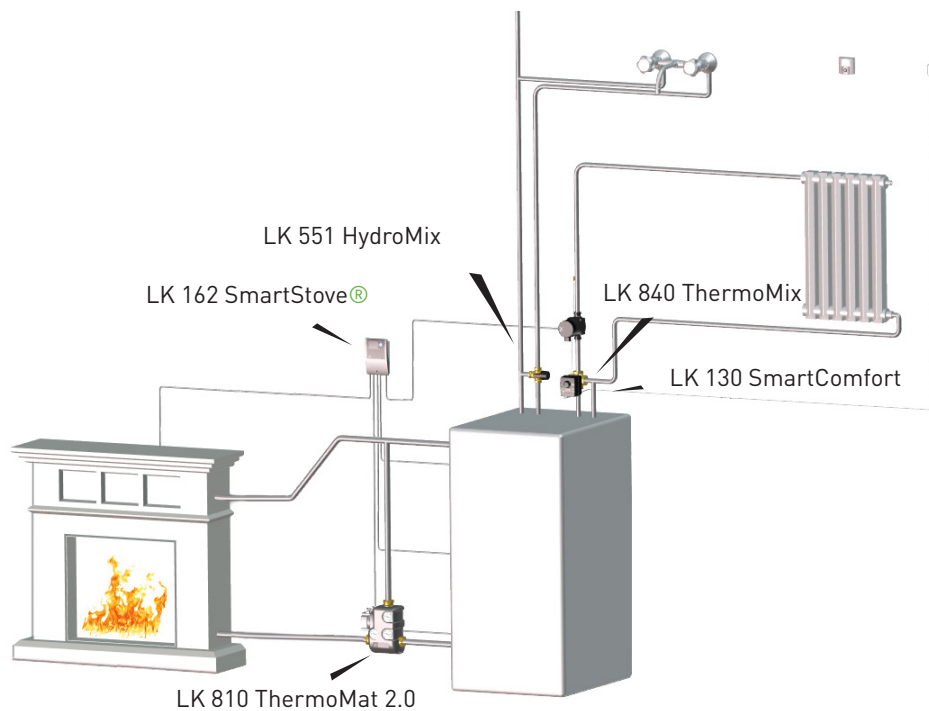
### Article

LK 162 SmartStove®

### Weight kg

0.7

Four sensors included (PT 1000 - 4 m cable).



**SMARTSTOVE® FEATURES:**

- Acoustic alarm and indication in the display if over temperature should occur in stove or buffer tank.
- A temperature sensor in the stove controls the charge pump of the loading unit, no flue-gas thermostat is needed.
- Pump delay function. The circulation pump does not start until the stove has reached a certain temperature. This saves energy, prevents tarring and prolongs the life-time of the stove.
- Dynamic pump control can be activated when the loading unit is equipped with a speed-controlled pump. The pump control keeps the flow at a constant temperature.
- Economy or comfort mode available.
- Controls an additional heat source.
- SmartStove® tells you when to light up the stove in order to cover the need for warm water and heat.
- Delay function for the additional heat source.
- 7 hydraulic systems which can be mirrored.
- 2 outputs for speed-controlled pumps with PWM- and/or analogue signal.
- 6 terminals for temperature sensors.
- 1 floating change-over contact.
- SD card slot.
- USB for PC connection.
- Legionella prevention.
- Pump exercise.
- Freeze protection.
- Long running time for pellet stoves which prolongs lifetime of the ignition element.

# Go green!

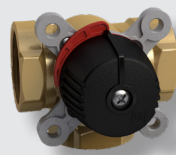
LK 162 SmartStove® is one of our many energy saving products for your heating system. See the complete range at [www.lkarmatur.com](http://www.lkarmatur.com)



LK 551  
HydroMix



LK 130  
SmartComfort



LK 840  
ThermoMix®



LK 810  
ThermoMat 2.0

---

**LK ARMATUR AB**

Garnisonsgatan 49  
SE-254 66 Helsingborg  
Sweden

Phone: +46 (0)42-16 92 00

Fax: +46 (0)42-16 92 20

info@lkarmatur.se

order@lkarmatur.se

**FOR THE SIMPLER, SMARTER EVERYDAY**

Simpler. Smarter. More sustainable. At LK, we believe there's a better way to do everything. It's a belief all of us at LK apply to every product and solution we create – from water, heating and hydronic solutions to pipe extrusion.

Our **LK Armatur** business area is a leader in Europe, producing millions of valves per year for the global HVAC market. Beyond individual products, we understand how all parts interact in your complete application. From standard to sophisticated customizations of valves, controllers, components and prefabricated units, our full-spectrum expertise makes it easy to get the results you need today, while anticipating your needs tomorrow.

